

PUBLIC HEALTH CONNECTION

Staff Conduct Drive Thru Influenza Vaccination Exercise

Since 2003, The Kittitas County Public Health Department (KCPHD) staff has been conducting drive thru influenza vaccination clinics. The department uses the annual drive thru flu clinic to practice for the possibility of a disease outbreak that would require either vaccinating or distributing medication to a large number of people in Kittitas County.

Liz Whitaker, Community Health Supervisor, points out that “having people stay in their cars, keeps people from congregating and possibly spreading any infectious disease during an outbreak. When we practice our emergency response, we want to

practice how we would actually respond.”

The department partners with the Kittitas County Chapter of the American Red Cross, Central Washington

University Emergency Medical Services Paramedicine Program, Kittitas County Emergency Management, and Kittitas County Search and Rescue.

On October 4, 2013, KCPHD

provided flu vaccines from 8:00 am to 5:00 pm for children and adults at the Kittitas County Event Center (Fairgrounds). During the exercise, 190 people received their flu vaccine for the year.



New Grants Awarded

KCPHD received three new grants. The Washington State Department of Health awarded a \$10,000 quality improvement grant to KCPHD for improving the department’s strategic planning process. “A strategic plan is essentially a road map for an agency, with organizational goals and clear steps for achieving those goals,” stated Robin Read, Public Health Administrator.

KCPHD also received \$22,500 from the National Association of County & City Health Officials (NACCHO) Accreditation Support Initiative (ASI).

There were 147 applications for the ASI grant and the review and selection process was highly competitive with only twenty awardees receiving funding. “Amy Fuller, Assessment Coordinator, has been an integral part of the department receiving these new funds,” stated Robin Read, Administrator.

The ASI grant will enable staff to create a quality improvement plan, which is a requirement for accreditation.

In addition, the public health department received \$30,000 for work under the Community Transformation

Grant (CTG). CTG funds will be utilized to create policy change at our college campus, Central Washington University, to create a smoke and/or tobacco free campus. They will also be used to implement workplace wellness policies in the county.

KCPHD has also submitted a \$25,000 air quality proposal to the Washington State Department of Ecology. The goal of the grant is to ultimately reduce particulate matter in the air from wood burning.

Developmental Screening

Community Health staff has been coordinating with Kittitas County medical providers to implement universal development screening for children.

Staff conducted presentations about screening to several of the family practices including Family Health Care, Community Health of Central Washington, and Kittitas Valley Healthcare of Ellensburg and Cle Elum.

On December 16, the department hosted a follow up presentation about implementing universal screening using the Ages & Stages Questionnaires (ASQ). Specialists from Children's Village and Yakima Valley Memorial Hospital spoke about using ASQ to ensure that children are on schedule for growth and development.



| Department-Wide | 1Q | 2Q | 3Q | 4Q | 2013 | 2012 |
|--|-------|------|------|-------|-------|-------|
| <i>Financial</i> | | | | | | |
| Existing Fund Sources | 20 | 20 | 20 | 20 | 20 | 22 |
| New Grants Awarded | 1 | 0 | 1 | 3 | 5 | 3 |
| New Fund Sources--Other | 2 | 0 | 0 | 1 | 3 | 0 |
| Grant Applications | 2 | 0 | 1 | 5 | 8 | 8 |
| <i>Staff</i> | | | | | | |
| Current FTEs | 17.55 | 17.7 | 17.9 | 17.95 | 17.75 | 14.45 |
| Current Active Volunteers | 7 | 2 | 5 | 2 | 10 | 12 |
| new volunteers | 1 | 2 | 1 | 0 | 4 | n/a |
| <i>Assessment</i> | | | | | | |
| Health Data Requests | 0 | 1 | 3 | 5 | 18 | 4 |
| Quality Improvement Projects | 0 | 0 | 0 | 1 | 1 | 2 |
| <i>Communications</i> | | | | | | |
| Media Contacts | 35 | 34 | 38 | 40 | 147 | 182 |
| Health Care Provider Releases | 7 | 5 | 0 | 0 | 12 | 35 |
| <i>Other</i> | | | | | | |
| Community Meetings & Presentations | 127 | 166 | 128 | 157 | 578 | 488 |
| Updates to Codes and Policies | 1 | 1 | 0 | 1 | 3 | 12 |
| Vital Records | | | | | | |
| Births Registered | 95 | 93 | 87 | 80 | 355 | 363 |
| Birth Certificates Issued | 257 | 257 | 245 | 175 | 934 | 1042 |
| Deaths Registered | 70 | 50 | 72 | 58 | 250 | 226 |
| Certified Copies of Death Certificates Issued | 285 | 231 | 289 | 204 | 1009 | 861 |
| Fetal Deaths Reported | 0 | 0 | 1 | 0 | 1 | 1 |
| Child Deaths Reported | 1 | 0 | 0 | 3 | 4 | 2 |
| Tobacco Prevention and Control Program | | | | | | |
| Smoking in Public Places Complaints | 2 | 0 | 0 | 0 | 2 | 3 |
| Educational Contacts with Tobacco Retailers | 82 | 37 | 0 | 0 | 119 | 149 |
| Access to Baby and Child Dentistry (ABCD) | | | | | | |
| New Enrollees | 34 | 34 | 9 | 8 | 85 | 263 |
| Referrals Received | 62 | 72 | 9 | 705 | 848 | 332 |

PUBLIC HEALTH CONNECTION

Communicable Disease (CD) & Tuberculosis (TB)

| | 1Q | 2Q | 3Q | 4Q | 2013 | 2012 |
|--|----|----|----|----|------|------|
| Active TB Confirmed Cases | 0 | 0 | 0 | 0 | 0 | 0 |
| Suspect TB Investigations | 0 | 0 | 0 | 0 | 0 | 2 |
| CD Confirmed Cases | 12 | 18 | 23 | 9 | 62 | 80 |
| Other CD Investigations | 23 | 4 | 19 | 9 | 55 | 131 |
| Sexually Transmitted Diseases Reported | 48 | 56 | 42 | 33 | 179 | 211 |
| Food Illness Complaints | 4 | 5 | 1 | 0 | 10 | 12 |
| TB Skin Tests (PPD and/or QFG) | 21 | 18 | 31 | 35 | 105 | 106 |
| Latent TB Infection Referrals | 0 | 1 | 0 | 1 | 2 | 1 |

Immunization

| | 1Q | 2Q | 3Q | 4Q | 2013 | 2012 |
|---------------------------------|-----|-----|----|-----|------|------|
| Total Vaccinations | 169 | 169 | 93 | 298 | 729 | 844 |
| Adults Receiving Vaccinations | 69 | 68 | 40 | 106 | 283 | 302 |
| Children Receiving Vaccinations | 23 | 32 | 20 | 132 | 207 | 316 |
| Flu Vaccinations | 28 | 2 | 18 | 206 | 254 | 376 |

Overseas Travel

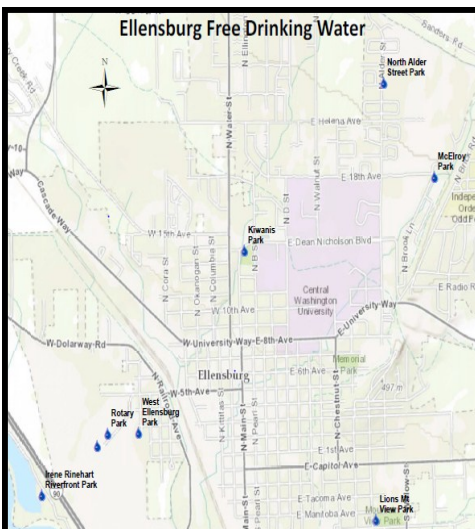
| | 1Q | 2Q | 3Q | 4Q | 2013 | 2012 |
|-------------------------------|----|----|----|----|------|------|
| Travel Consultations | 17 | 23 | 12 | 4 | 56 | 63 |
| Specialty Travel Vaccinations | 43 | 21 | 8 | 2 | 74 | 48 |

How GIS Has Changed KCPHD Projects

Early in 2013, three KCPHD staff completed a Geographic Information System (GIS) training. GIS is a program that uses base maps and visual data to track information.

Since the training, KCPHD staff has created GIS maps for water drinking fountains in the county, old landfill sites, and food resources such as local farms, food banks, and grocery stores.

Currently, KCPHD staff is working on creating an interactive GIS map for public access. Information from over one hundred community water systems (serving three to fifteen households) gathered in 2007 will be available online. "Kittitas County Public Health Department will be the only health department offering an online system where customers can locate water information by clicking on a map with their specific parcel," asserts Erin Moore, Environmental Health Technician.



Healthplanfinder Opens

On October 1, individuals, families, and small businesses were able to use the new online marketplace, Washington Healthplanfinder, to enroll in health insurance plans and receive financial assistance such as tax subsidies.

To prepare for the launch of the Healthplanfinder, a mobile enrollment tour travelled across the state in an effort to reach the one million uninsured residents in Washington.

KCPHD has two trained staff, Julia Karns and Kasey Knutson, as "navigators" to help people find, compare, and select health plans.

Within the first month of opening, the

Healthplanfinder had 55,000 enrollments statewide.

Ms. Julia Karns has received a lot of interest from the public. "People are contacting me with a variety of

questions, ranging from general information about the new health benefit exchange to how to apply online."

As of December 24, the Washington Healthplanfinder announced that 213,759 Washington State residents enrolled in private coverage or Washington Apple Health (Medicaid). Enrollments spiked by 20,000 enrollees between December 20 to the deadline of December 23.

The open enrollment period extends through March 31, 2014. KCPHD staff will continue to reach out to the uninsured residents of Kittitas County and assist people enrolling online.



Two New Staff Hired

The Kittitas County Public Health Department is one hundred percent staffed as of November.

On October 28, Elizabeth Ketterer was hired as a Community Health Specialist. Ms. Ketterer is a resident of Cle Elum who previously volunteered as a Board of Health Advisory Committee member. She has a public health education and recently moved here from California. Ms. Ketterer is fairly new to Kittitas County, but has quickly established herself as an invested community member.

department since the beginning of 2013. She has assisted with a variety of projects including education about the importance of hand washing, securing car loads, and emergency preparedness for the Great Washington Shakeout.

Ms. Ketterer and Ms. Griessel join the Community Health division.



On November 4, Skylar Griessel was also hired as a Community Health Specialist. Ms. Griessel graduated from Central Washington University with a degree in public health. However, Ms. Griessel is not “new” to the department, since she has been an intern at the



HIV/AIDS and Hepatitis C Testing

| | 1Q | 2Q | 3Q | 4Q | 2013 | 2012 |
|-------------------|----|----|----|----|------|------|
| HIV Tests | 9 | 6 | 4 | 0 | 19 | 24 |
| Hepatitis C Tests | 16 | 6 | 0 | 0 | 22 | 22 |

Syringe Exchange

| | | | | | | |
|--|-----|-----|----|-----|------|------|
| Syringe Exchange Participants (duplicated) | 46 | 8 | 4 | 14 | 72 | 156 |
| Syringes Exchanged | 565 | 305 | 40 | 439 | 1349 | 2999 |

Education

| | | | | | | |
|--|----|----|----|----|-----|----|
| High Risk Presentations | 4 | 8 | 5 | 12 | 29 | 9 |
| People in Attendance at High Risk Presentations | 46 | 60 | 37 | 94 | 237 | 60 |
| Blood Borne Pathogen (BBP) & HIV/AIDS Awareness Classes | 0 | 0 | 1 | 0 | 1 | 8 |
| People in Attendance at BBP & HIV/AIDS Awareness Classes | 0 | 0 | 17 | 0 | 17 | 55 |

Breast, Cervical, and Colon Health

| | 1Q | 2Q | 3Q | 4Q | 2013 | 2012 |
|------------------------|----|----|----|----|------|------|
| New Clients Enrolled | 5 | 0 | 0 | 0 | 5 | 36 |
| Total Clients Screened | 15 | 8 | 0 | 0 | 23 | 127 |

Child Care Health Promotion

| | 1Q | 2Q | 3Q | 4Q | 2013 | 2012 |
|------------------------------|----|----|----|----|------|------|
| Nurse Consultant Site Visits | 0 | 0 | 0 | 0 | 0 | 20 |
| Other Consultations | 0 | 0 | 0 | 0 | 0 | 10 |

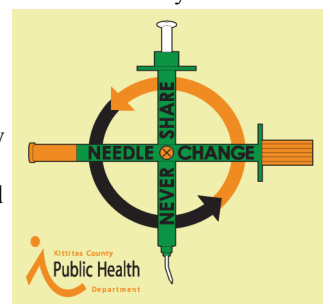
A Visit to King County Syringe Exchange

On October 25, Julia Karns, Community Outreach Worker, attended training about how to start and facilitate support groups for people living with hepatitis C (HCV) at the Hepatitis Education Project located in King County.

Ms. Karns was trained in how to administer a new rapid HCV screening test. Hepatitis C is a growing concern for adults from the “baby boomer” generation who may be dying at younger ages from complications related to HCV. Ms. Karns learned about techniques to target adults who may be at risk from that age group.

In addition, Ms. Karns visited the Public Health - Seattle and King County’s syringe exchange

program. She had the opportunity to be educated under King County’s Narcan distribution training program. Narcan is used to counter the effects of opiate overdose. Information included how and what to do when administering Narcan to someone you know is overdosing, how to track people who have received the training, and how to track individuals saved by Narcan.



PUBLIC HEALTH CONNECTION

| Zoonotics and Vector | 1Q | 2Q | 3Q | 4Q | 2013 | 2012 |
|-----------------------------|----|----|----|----|------|------|
| Animal Quarantine Required | 0 | 0 | 1 | 0 | 1 | 0 |
| Animals Tested for Rabies | 0 | 3 | 4 | 0 | 7 | 2 |
| Dead Bird Phone Calls | 0 | 1 | 1 | 0 | 2 | 2 |
| Dead Birds Collected | 0 | 0 | 0 | 0 | 0 | 5 |
| Mosquito Clusters Collected | 0 | 0 | 16 | 0 | 16 | 4 |

| Living Environment | 1Q | 2Q | 3Q | 4Q | 2013 | 2012 |
|------------------------|----|----|----|----|------|------|
| <i>Schools</i> | | | | | | |
| Plans Reviewed | 0 | 0 | 0 | 0 | 0 | 0 |
| Building Inspections | 12 | 7 | 0 | 0 | 19 | 16 |
| Playground Inspections | 8 | 3 | 0 | 0 | 11 | 9 |
| Complaints | 1 | 0 | 1 | 0 | 2 | 0 |

| | | | | | | |
|--------------------------------|---|---|----|----|----|----|
| <i>Public Pools & Spas</i> | | | | | | |
| New Permits | 1 | 0 | 2 | 0 | 3 | 0 |
| Renewal Permits | 0 | 0 | 6 | 24 | 30 | 41 |
| Routine Inspections | 8 | 0 | 13 | 3 | 24 | 36 |
| Re-inspections | 1 | 0 | 5 | 0 | 6 | 6 |
| Complaints | 0 | 0 | 0 | 0 | 0 | 1 |

| | | | | | | |
|--------------------------|---|----|---|---|----|----|
| <i>Camps & Parks</i> | | | | | | |
| New Permits | 0 | 0 | 0 | 0 | 0 | 2 |
| Renewal Permits | 0 | 14 | 3 | 0 | 17 | 14 |
| Routine Inspections | 0 | 0 | 8 | 5 | 13 | 10 |
| Re-inspections | 0 | 0 | 0 | 0 | 0 | 0 |
| Complaints | 0 | 0 | 0 | 0 | 0 | 0 |

Responding to Mold Issues

In response to a high volume of mold inquiries, KCPHD now offers packets of information that the public can take home. The information includes a mold brochure and twenty minute DVD. Our department decided to take a more proactive role in addressing mold issues rather than referring customers to a clean-up company.

The brochure details the risks of mold, prevention tools, cleanup information, renter/tenant landlord rights, health effects, and available resources. The DVD discusses indoor air quality and mold issues.

The mold packets are available at the front desk of the health department and the brochures can be accessed on the public health website at,

<http://www.co.kittitas.wa.us/health/programs/documents/kcphd-mold-brochure.pdf>



Sanitary Surveyors

Holly Myers, Erin Moore, and Holly Duncan, of the Environmental Health division, attended the Advanced Sanitary Surveyor training workshop in Moses Lake on December 11 and 12.

A sanitary survey is the inspection of a water source, facility, equipment, operation, and maintenance of a

public water system.

A sanitary survey is required every three to five years in Washington State for Group A water systems.

Group A water systems are any system serving fifteen or more households.

West Coast Epidemiology

On December 2, Public Health Administrator Robin Read and Liz Whitaker, Community Health Services Supervisor, attended the West Coast Epidemiology conference, which focuses on communicable diseases.

Presenters and attendees came from British Columbia, Alaska, Idaho, California, Utah, Nevada, as well as Washington to learn about

disease outbreaks around the region.

Presentations included the campylobacteriosis outbreak in Alaska caused by raw milk as well as the salmonella outbreak in Washington and California associated with chicken.

Federal Furlough

This October Congress' inability to agree on a spending bill led to the 17th government shutdown in history. During the shutdown, approximately 800,000 government workers were put on a leave beginning October 1.

Hundreds of Washington State employees were furloughed as well as Kittitas County's Health

Department CDC fellow, Alisa Spieckerman.

The political battle was over President Obama's new health care law. The House and Senate approved legislation ending a disruptive sixteen day government shutdown and extending federal borrowing power to avoid a financial default.

Vaccine Storage Safety

On December 10, Community Health staff practiced the emergency vaccine storage plan. During a scheduled power outage, staff transferred vaccine to the Kittitas Valley Healthcare Pharmacy.

Vaccine must be stored at proper temperatures. Most vaccines are stored between thirty five and

forty six degrees Fahrenheit. Vaccine that is not properly stored cannot be used, which results in financial loss. For example, one dose of the chicken pox vaccine has an estimated value of \$94.14.

KCPHD is responsible for properly storing thousands of dollars' worth of vaccine.

| Solid Waste | 1Q | 2Q | 3Q | 4Q | 2013 | 2012 |
|----------------------------------|----|----|----|----|------|------|
| New Facility Applications | 0 | 0 | 0 | 0 | 0 | 0 |
| New Exempt Facility Applications | 0 | 0 | 0 | 0 | 0 | 0 |
| Permit Renewals | 1 | 0 | 8 | 0 | 9 | 8 |
| Permitted Facility Inspections | 7 | 8 | 7 | 8 | 30 | 33 |
| Exempt Facility Inspections | 0 | 0 | 0 | 0 | 0 | 0 |
| Complaints | 14 | 27 | 5 | 2 | 48 | 16 |
| Incidents | 0 | 0 | 0 | 0 | 0 | 2 |

| On-Site Sewage (OSS) | 1Q | 2Q | 3Q | 4Q | 2013 | 2012 |
|----------------------|----|----|----|----|------|------|
| Records Requests | 34 | 24 | 20 | 21 | 99 | 78 |
| Complaints | 0 | 0 | 5 | 0 | 5 | 8 |

Permits & Inspections

| | | | | | | |
|------------------------------|----|----|----|----|-----|-----|
| New Installation Permits | 22 | 45 | 35 | 41 | 143 | 114 |
| Repair Installation Permits | 8 | 10 | 4 | 7 | 29 | 27 |
| Renewal Installation Permits | 1 | 2 | 3 | 2 | 8 | 3 |
| Site Evaluations | 23 | 54 | 59 | 21 | 157 | 150 |
| Final Inspections | 8 | 40 | 49 | 31 | 128 | 85 |
| Final Permits | 11 | 7 | 11 | 49 | 78 | 64 |

Short and Long Plats

| | | | | | | |
|-------------------|---|---|---|---|----|----|
| Plat Applications | 5 | 3 | 2 | 1 | 11 | 10 |
| Soil Logs | 1 | 1 | 3 | 1 | 6 | 15 |

Response to Methamphetamine Contamination

On October 4, the Kittitas County Public Health Department issued a health order prohibiting use of a residence.

The order prohibiting use was based on contamination with hazardous chemicals including but not limited to acids, bases, and flammable solutions with the potential to be used in the process of creating methamphetamine.

According to Washington State Administrative Code (WAC) 246-205-560, the local health officer must notify occupants and persons having property interest within ten days that the property is prohibited for use. Additional steps also include informing of the potential health risks, penalties for noncompliance, and measures for the property owner to take in order to have the property decontaminated.

"It is our duty to prevent exposure to hazardous materials from chemical contamination," stated Health Officer Dr. Mark Larson. Health effects in this circumstance can range from shortness of breath, dizziness, chemical burns, with potential long term hazards like cancer, brain, liver, and kidney damage.

The health order was lifted after the residence was professionally cleaned.



PUBLIC HEALTH CONNECTION

| Food Safety | 1Q | 2Q | 3Q | 4Q | 2013 | 2012 |
|---|-----------|-----------|-----------|-----------|-------------|-------------|
| <i>Permits</i> | | | | | | |
| New Food Establishment Applications | 8 | 19 | 7 | 7 | 41 | 43 |
| Renewal Food Establishment Applications | 2 | 2 | 97 | 167 | 268 | 275 |
| Temporary Food Establishment Applications | 4 | 31 | 47 | 5 | 87 | 77 |
| Food Handler's Permits Online | 450 | 558 | 547 | 335 | 1890 | n/a |
| Food Handler's Permits Office or Classes | 134 | 91 | 185 | 190 | 600 | 2347 |
| <i>Inspections</i> | | | | | | |
| Pre-Opening Inspections | 1 | 3 | 7 | 7 | 18 | 22 |
| Routine Inspections | 138 | 63 | 117 | 51 | 369 | 438 |
| Re-inspections | 0 | 0 | 3 | 0 | 3 | 9 |
| Temporary Event Inspections | 4 | 1 | 151 | 2 | 158 | 65 |
| <i>Contractual Inspections</i> | | | | | | |
| CWU Quarterly | 1 | 1 | 0 | 8 | 10 | 4 |
| Jail Quarterly | 1 | 1 | 0 | 1 | 3 | 4 |
| School Kitchens | 0 | 11 | 0 | 11 | 22 | 22 |
| <i>Enforcement Activities</i> | | | | | | |
| Red Item Violation >35 pts | 1 | 0 | 4 | 1 | 6 | 12 |
| Red Item Violation >70 pts | 0 | 0 | 0 | 0 | 0 | 0 |
| Operating without a Permit | 0 | 0 | 5 | 0 | 5 | 0 |
| Temporary Closures | 0 | 0 | 0 | 0 | 0 | 1 |
| Complaints | 10 | 6 | 1 | 1 | 18 | 21 |

| Drinking Water | 1Q | 2Q | 3Q | 4Q | 2013 | 2012 |
|--|-----------|-----------|-----------|-----------|-------------|-------------|
| Group A Water System Sanitary Surveys | 0 | 0 | 7 | 2 | 9 | 7 |
| Group B Water System Inspections | 2 | 1 | 2 | 2 | 7 | 3 |
| Individual Well Site Application Reviews | 19 | 30 | 17 | 13 | 79 | 50 |
| Well Site Inspections | 0 | 0 | 2 | 1 | 3 | 7 |
| Adequate Water Supply Determination Applications | 56 | 124 | 105 | 158 | 443 | 179 |
| Well Delegation Inspections | 6 | 8 | 9 | 5 | 28 | 19 |
| Group B Paperwork Received | 1 | 2 | 0 | 1 | 4 | 1 |
| Group B Systems Approved | 2 | 0 | 0 | 1 | 3 | 4 |
| Complaints | 1 | 0 | 1 | 0 | 2 | 4 |

Electronic Inspection Data

In 2012, Kittitas County Public Health Department received a grant to conduct a quality improvement process to improve the efficiency of the data collection and monitoring processes in the Environmental Health division. Previously, there were multiple places that data was entered and discrepancies between data sources.

fully functional, Environmental Health staff will be able to spend less time doing data entry and more time working with customers and the community and processing applications quicker. In addition, the department's data will be more consistent, reliable, and accurate.

In collaboration with county information technology staff, data collection, monitoring, and reporting systems are being built on the county's internal network. In addition, Windows tablets were purchased for field staff to collect inspection data electronically and have it automatically upload into the network.

Once the systems and tablets are



? **Did you know** ?

- An estimated 50,000 deaths are caused each year, nationally, from influenza.
- The mortality rate for influenza and pneumonia is higher in Kittitas County compared to Washington State.
- Flu viruses are constantly changing. It's not unusual for new flu virus strains to appear each year.
- Flu activity can begin as early as October and occur as late as May.
- People with flu can spread it to others up to about six feet away.
- Generally, the flu is worse than the common cold. Symptoms such as fever, body aches, extreme tiredness, and dry cough are more common and intense.
- The Centers for Disease Control and prevention (CDC) recommends a yearly flu vaccine for everyone six months and older.



Board of Health Adopts New Fee Schedule

On November 26, a public hearing was held to approve KCPHD's 2014 fee schedule. Ms. Read, Public Health Administrator, discussed the work the department completed in order to keep in line with cost recovery. She addressed changes to fee policies, hourly rate changes, eliminating fees, and adding new fees.

After the opportunity for

the public to speak, the Board of Health motioned to approve the resolution to adopt the 2014 fee schedule.

Paul Jewell, Board of Health and County Commissioner,



believes "most of the fees have finally reached cost recovery levels and will help the department have sustainable programs."

KCPHD has increased some service fees in phases in order to avoid a dramatic increase in fees.

The new fees and changes are effective January 1, 2014.

Board of Health Advisory Committee Has New Bylaws

The Kittitas County Board of Health Advisory Committee has updated its bylaws.

The new bylaws amend the previous version from 2001. The changes to the current bylaws include changes to the mission, membership, compensation, staffing, as well as changes to officers and officer duties.

Hartwig Vatheuer, BOHAC Chair, recommended some

additional changes before finalizing the bylaws.

In addition, a subcommittee was created to review current membership and the recruitment of new members.



Public Health Staff Volunteer at FISH Food Bank

On November 9, several KCPHD staff volunteered on a Saturday at the FISH food bank soup kitchen. Every Saturday, different groups volunteer to cook a meal for the soup kitchen.

All volunteers are required to have a food handler's card. The soup kitchen has all of the utensils and basic ingredients. Volunteers show up, make food, serve food, and clean up

afterwards.

"I care about my community through my job, but also as a community member and I want my kids to see that," stated Environmental Health Specialist II Melissa Schumaier. (Savannah Schumaier pictured right).

